

# Quartet KV. 464 (nr. 18)

for 2 flutes, clarinet and bassoon

W. A. Mozart (1756-1791)

Allegro.

Flute I

9

23

32

41

50

59

67

76

85

94

104

*p* *f* *p* *f* *p* *f* *p* *f* *p* *f* *p* *cresc*

113 *f*

122 *p*

132 *cresc* *f*

143 *p* *cresc* *f* *p*

152 *f*

162 *f*

171 *p* *f* 5

185 *p*

194 *f* *p* 3 3 3

203 3 3 3 3 3 3

212 *p*

221 *cresc* *f*

229 *p*

239 *f*

250 *f p cresc f p*

261 *f*

Minuetto.

Flute I *f p f p f p*

12 *p f*

24 *p*

37 *f p*

48 *f p*

59 *f*

Trio.

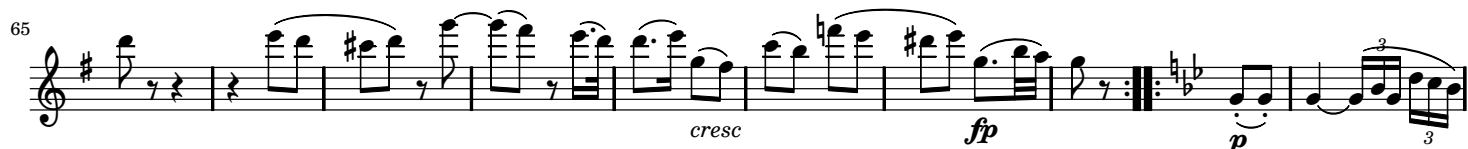
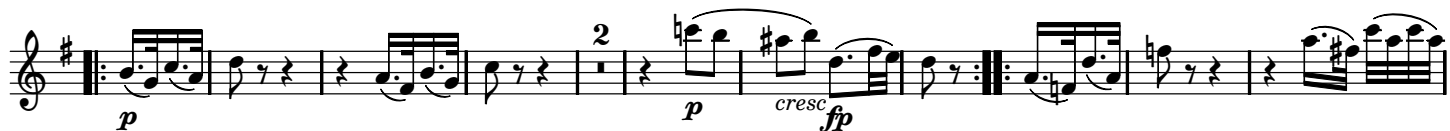
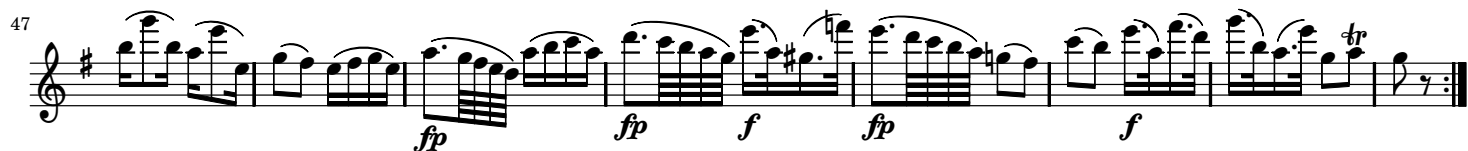
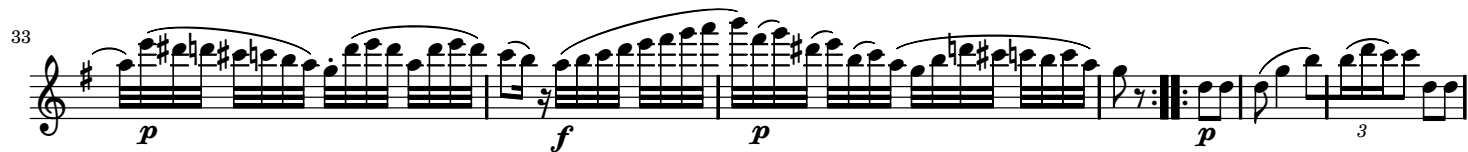
69

79

86 *cresc (f)*

96 *(decresc) p*

## Andante.



90 *f* *p* *p*

99 *f*

109 *p*

119 *f* *p* *p*

129

138 *f* *p* *f*

149 *p*

159 *f calando* *p* *f*

169 *p* *cresc* 3 3 *p*

177 *f* *p*

Allegro.

Flute I *p*

9 *f*

18

27 *sf p*

37 *sf p p*

48 *cresc f*

58 *decresc. p f*

66 *p*

75 *f*

84 *p f*

97

107 *p*

116

129 *cresc f*

140 *p (f) p*

148

Detailed description of the musical score: The score is written for a single melodic line in D major (two sharps). It consists of 12 measures per system, with systems numbered 27, 37, 48, 58, 66, 75, 84, 97, 107, 116, 129, 140, and 148. The notation includes eighth and sixteenth notes, often beamed together, and rests. Dynamics such as *sf* (sforzando), *p* (piano), *f* (forte), *cresc* (crescendo), and *decresc.* (decrescendo) are used to indicate volume changes. Fingerings (2, 3) and slurs are present throughout. A repeat sign with first and second endings is used at measure 75. A fermata is placed over a whole note at measure 116.

157 

166 

177 

186 

198 

207 

216 

225 

234 

244 

252 